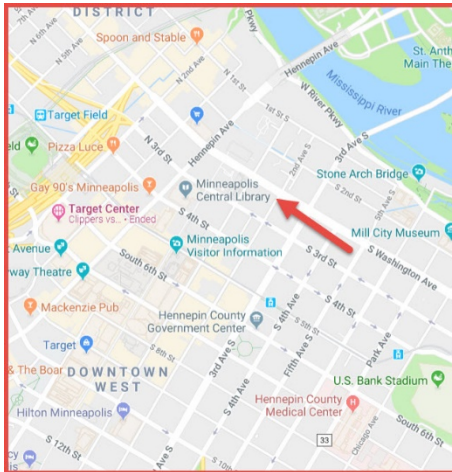


GARFIELD CLARK
COMMERCIAL
REAL ESTATE

Office Condominium Downtown Minneapolis **10,126 SF "For Sale"** Minneapolis, Hennepin, MN

MARCH 21, 2018

250 SOUTH 2ND AVENUE #120, 55401



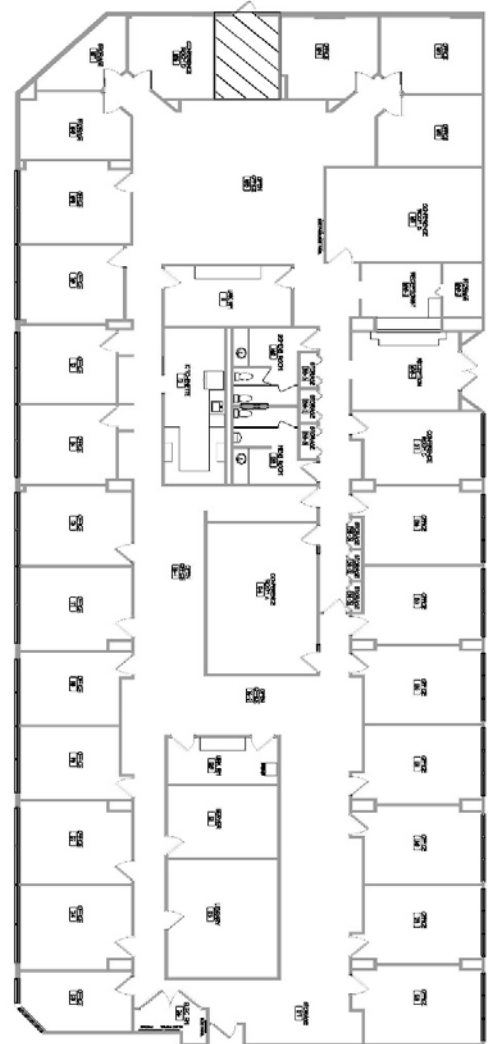
**One of a kind, smaller
downtown office "for sale"**
**Includes 6 underground
heated parking spaces.**
Built: 1982 - Skyway served

The Crossings
250 2nd Avenue
Minneapolis, MN

1 SUITE 121
250 2nd Avenue
Minneapolis, MN

tanek
1115 South Park Avenue, Minneapolis, MN 55415
763.278.8888
www.tanek.com

As shown on record
Map of 2018, 07/17
A100



Garfield Clark Commercial
1235 Yale Place #907
Minneapolis, MN 55403

612 868 8314
gclark@garfieldclark.com
www.garfieldclark.com