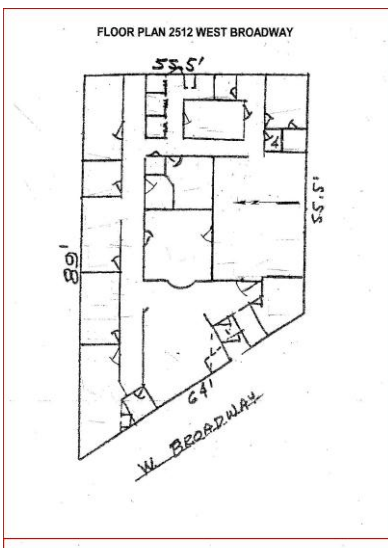
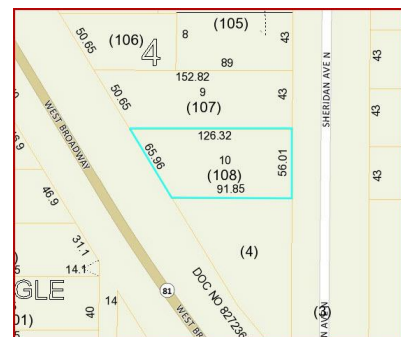


For Sale - 6,228 Square Feet
2500 & 2512 West Broadway Avenue
Minneapolis, Minnesota 55411



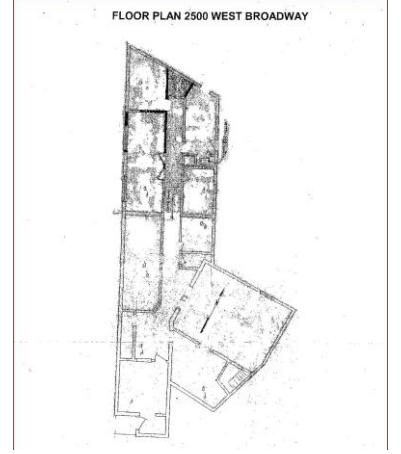
Located on West Broadway Avenue, adjacent to CVS and near North Memorial Hospital, less than 10 minutes from downtown Minneapolis

PID #'s: 08 029 924 44 0004
08 029 924 44 0108

Size: 11,265 square feet of Land; 6,228 square feet Of Building

Zoning: OR-1, Neighborhood Office Residential

Price: \$88.31 per square foot (\$550,000.00)



For more information, please contact:
Garfield Clark 612-868-8314
gclark@garfieldclark.com

GARFIELD CLARK
COMMERCIAL
REAL ESTATE